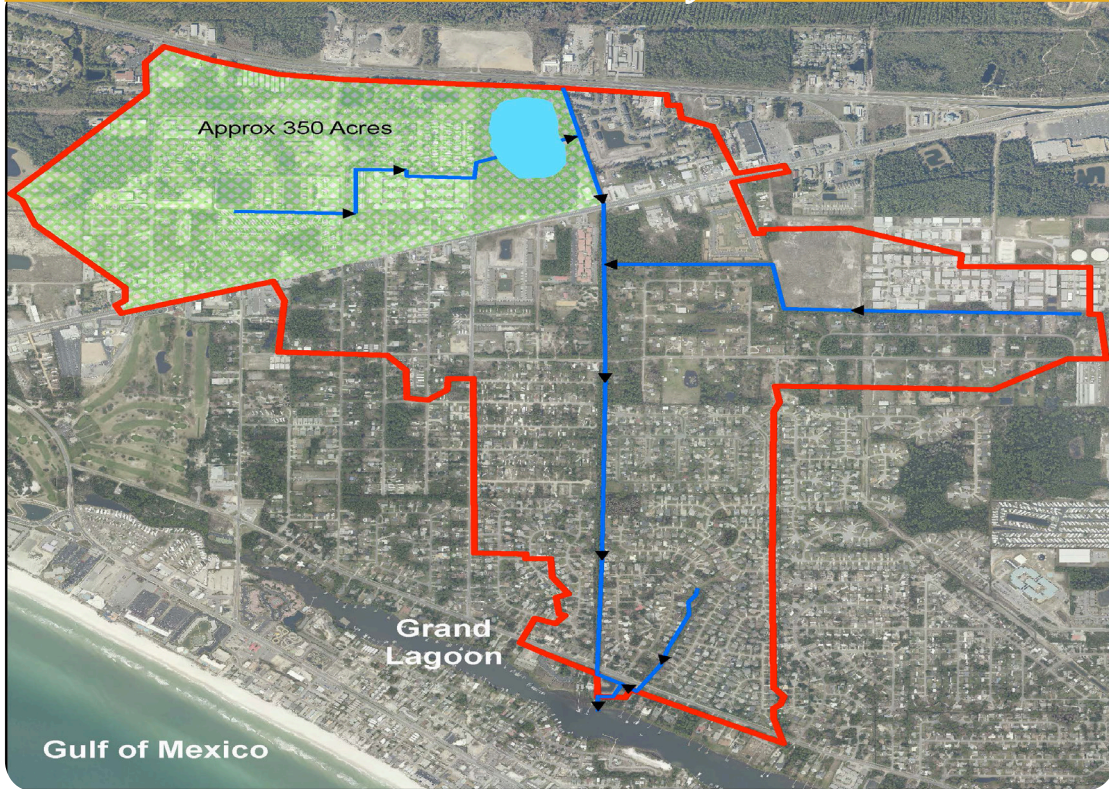




# Stormwater Improvement

## ALLISON AVE. REGIONAL STORMWATER FACILITY PROJECT



### SOLUTION

*The proposed project includes a stormwater treatment facility designed to improve water quality flowing into Grand Lagoon and reduce the recurring flooding in the Vecuna Circle and Faith Lane Areas.*

### PROBLEM

Grand Lagoon is one of the older developed areas of Panama City Beach. The Grand Lagoon area suffers from a lack of stormwater treatment, flooding, and it is in critical need of stormwater facilities.