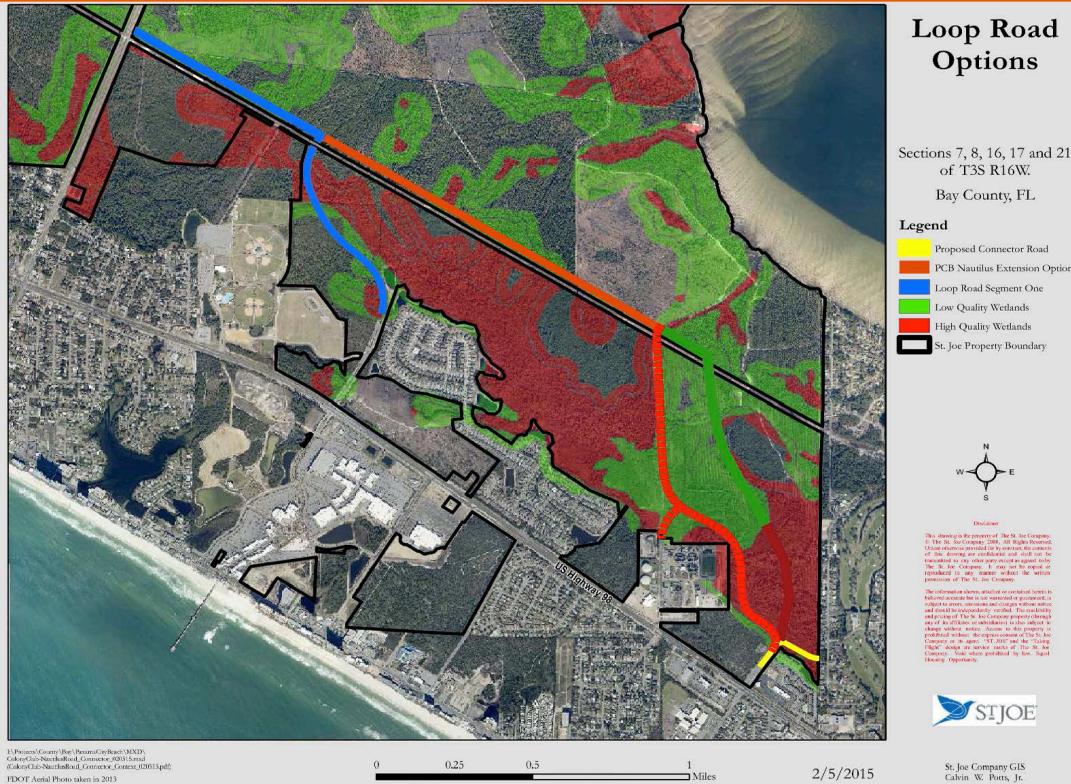




Capacity Improvement

PARKWAY (LOOP RD PHASE 2)



SOLUTION

This project is the connection of Bay Parkway Phase 1 eastward down the power line easement and ties into Nautilus St. This will be a public roadway with associated connector road crossing to help facilitate movement from east to west.

This road will provide an alternative limited access route to bypass around Pier Park, Frank Brown Park, and the Palmetto Trace subdivision once the connector road is complete. This alternate roadway will alleviate existing and future traffic congestion. The Project is estimated to redirect 14% of the volume from the Panama City Beach Parkway and State Road 79 intersection.

PROBLEM

Traffic congestion exists year round. All surrounding Florida Department of Transportation roadways are over capacity and the level of service does not accommodate the current flow of traffic. Traffic in this area is projected to increase in coming years further increasing congestion.

HALF CENT SALES TAX
BAY COUNTY & MUNICIPALITIES

