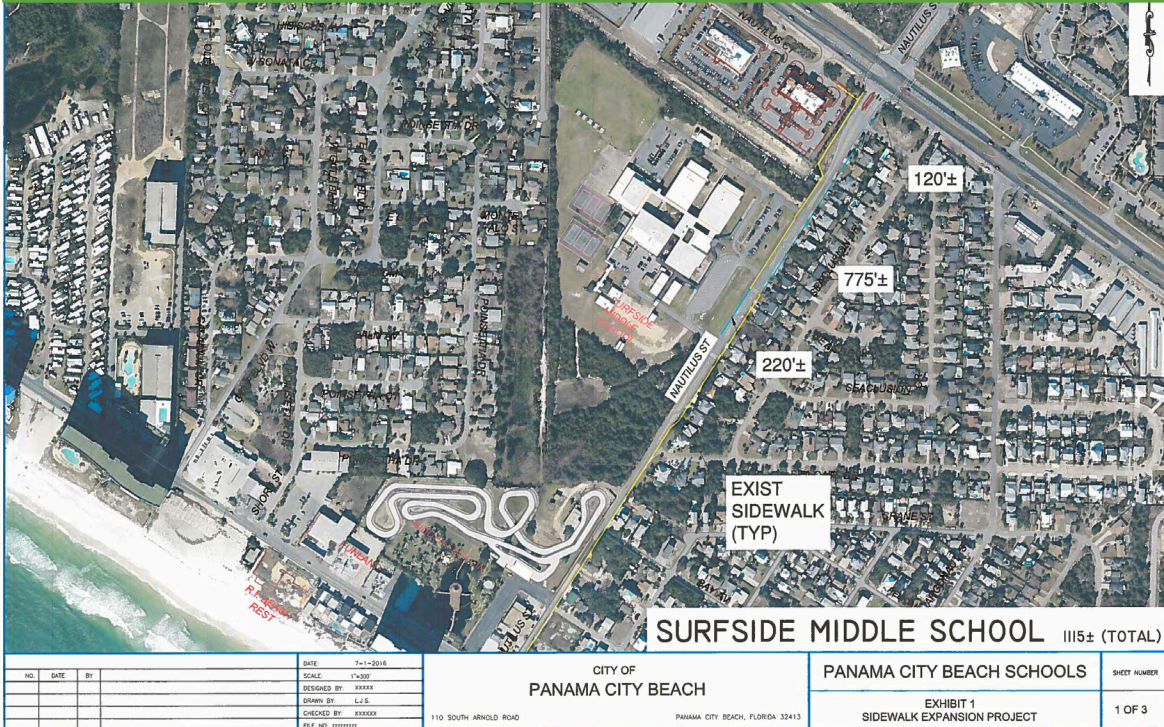




Roadway Safety

SURFSIDE MIDDLE SCHOOL SIDEWALK



SOLUTION

This project will provide 1,115 linear feet of 6 foot concrete sidewalk along Nautilus St. The walkway will be located on both the east and west side of the roadway around the school, with the west side all the way to Front Beach road.

A benefit of the project is safer pedestrian access to and from school. The construction of the walkway will offer a safe route to school for children and encourage bicycle and pedestrian activity in the area. In addition, it will offer access for all residents in the Seclusion and Bid-a-wee subdivision and reduce reliance on automobiles.

PROBLEM

This heavily traveled corridor lacks sufficient safe walking and biking paths for people living in the area and students traveling to and from Surfside Middle School.

